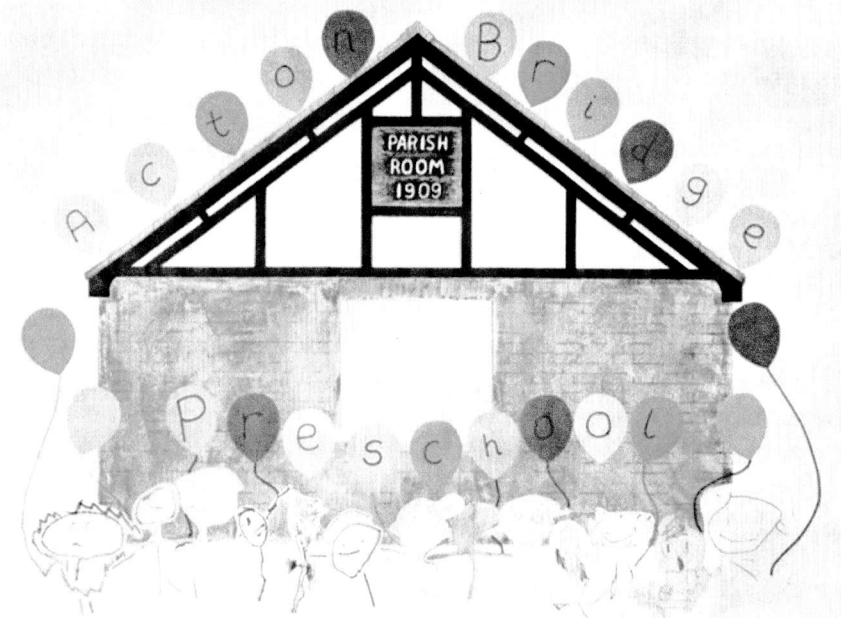


# Acton Bridge Newsletter May 2019

Acton Bridge Community Association Publication

[www.actonbridge.org](http://www.actonbridge.org)



One of the pictures by local children unveiled at the recent 'Friends of the Station' event. News on this, improved rail services and lots more inside.....

## Dates for your diaries May - July 2019

**Mon 13th May** Parish Council New Committee Meeting - 7.30pm

**Fri 21st June** Distaff Singers Concert - 7.30pm

**Weds 22 May** ABCA AGM - 7.45pm  
All welcome

**Sat 22nd June** Scarecrow Trail, for  
Preschool Funds

**Fri 31st May** Bingo for Preschool  
Funds - 8pm

**Fri 26th July** Bingo for Preschool  
Funds - 8pm

**Sat 15th June** The *BIG* Lunch



Check out the **REGULAR WEEKLY** and **MONTHLY** Groups below

WEEKLY	Morning	Afternoon	Evening
<b>Monday</b>	Pre-school	Weaver Vale Art Soc (except for last Monday of the month)	Tae Kwon Do Acton Bridge Art Group (exc 1st Mon)
<b>Tuesday</b>	Toddler Group Distaff Singers	Folk Dance Workshop Bridge Club	Scottish Dancing
<b>Wednesday</b>	Pre-school Jo's Art Group	Pre-school Jo's Art Group	Tae Kwon Do
<b>Thursday</b>	Pre-school	Pre-school	DIY Dancers
<b>Friday</b>	Slimming World Pre-school	Pre-school	
<b>Sat/Sun</b>	Available for hire	Available for hire	Available for hire
<b>Monthly</b>	<b>Mondays</b>	All day (last Monday of month) evening (1st Monday of month)	Verdin Beaders Parish Council
	<b>Tuesdays</b>	Afternoon (last Tues of month) Evening (2nd Tues of month)	Weaver Vale Art Society WI meetings
	<b>Fridays</b>	Morning (2nd Fri of month)	WI Flower arranging

## Great news for rail users

Starting on 19<sup>th</sup> May, Acton Bridge station will be getting an enhanced rail service. **The highlights include:-**

- a Sunday service for the first time in several decades, with roughly one train every 2 hours in each direction
- a much later train back from Liverpool on a Saturday evening (21:34 from Liverpool, 22:03 at Acton Bridge)
- a slightly later last train from Birmingham and Crewe on a Saturday evening

- a small number of extra daytime trains, filling in the long gaps when there were none
- direct trains to Birmingham Airport and the NEC
- direct trains to London Euston (although it's probably quicker to change at Crewe)

**Further details can be found nearer the time from the noticeboards at the station, the London Northwestern website or any rail journey planner.**

# Parish Council News

## Roads and Safety

The Parish Council had, when assessing the Precept for 2019 - 20, allowed for the purchase of an additional interactive speed sign.

At the March meeting the Parish Council examined the accounts and decided that there was sufficient financial security in the accounts for the new sign to be ordered without delay. This was done and the sign has been installed on the post outside the Parish Rooms on Hill Top Road. Data has been collected from the signs located on Acton Lane and Milton Rough (Facing to the Station). These signs have now been transferred to the original positions in Station Road and at Milton Rough the sign has been turned to detect traffic from Crowton direction.

The value of the signs, in road safety terms, is evident from the data obtained showing the effect on the speed of vehicles. None the less, vehicles travelling at excessive speeds are still being recorded. We know that some drivers think that speed limits only apply to other people but with the benefit of the data from the signs, the Police and Highways have positive foundations for action and enforcement. As mentioned in previous Newsletters, it is pleasing to see that the speed detector van is regularly visiting Acton Bridge and monitoring traffic on Station Road.

## Local Elections

The Parish Council has completed four years of 'Office' and will stand-down after the AGM on 29<sup>th</sup> April. In response to the notices for candidates to serve on the new Parish Council seven residents put themselves forward and were officially nominated. This means, as Acton Bridge has a permitted compliment of eight Councillors, that there will not be a Parish Council election and the seven candidates are therefore elected.

Of the outgoing Parish Councillors, Steve Pardoe has decided not to stand for the new Parish Council. His decision not to continue, while greatly respected, is a severe loss to the Parish Council. Steve, during his long service has been at the forefront of Parish Council work and has additionally been Vice Chairman for nearly all that time. A particular major involvement that Steve worked hard on was with the action group that opposed the building of the massive sub-station for Network Rail on Station Road. What a triumph and huge bonus to the Village it was when this project was refused.

### Parish Council News (continued)

Steve was responsible for setting up the Village web site and tackled the onerous task of publishing the multitude of documents and notices to comply with the legal requirements and transparency. Never was the expression 'a hard act to follow' more appropriately applied. Just for good measure, he also took on the workload of processing the data recordings from the speed signs and, as mentioned above, have proved such a valuable source of evidence.

### PCSO Surgeries

Our PCSO, Nichola Devey, has supplied the following surgery dates for Acton Bridge – Saturday May 25<sup>th</sup> June 15<sup>th</sup> and July 13<sup>th</sup>. Surgeries are 2-00 pm to 3-00pm in the Parish Rooms. Should residents have need, or prefer another location or time, Nichola has supplied surgery dates for Weaverham Community centre for May as follows; May 10<sup>th</sup> 7-8pm, May 15<sup>th</sup> 10-11am, May 22<sup>nd</sup> 7-8pm, May 27<sup>th</sup> 10-11am

### Bits and Pieces

A total of £785 was raised at the **Race Night on Saturday 23 March**. The evening was really well supported and a lot of fun was had. Thanks to Selina Rooney, and Jane Evans for all their hard work in organising the event and to everyone who helped out on the night.

**MOBILE LIBRARY—every 3rd Thursday** Did you know that the Mobile Library still visits Acton Bridge every 3 weeks? This service operates around local villages and calls into Acton Bridge between 10.55am - 11.15am on every 3rd Thursday. Dates are as follows: weeks commencing 6 May, 27 May, 17 June, 8 July, 29 July, 9 August. Search for CWAC Mobile Library service online for more information.



### Acton Bridge Preschool Association

The children are looking forward to messy activities such as planting various seeds both in the Preschool garden and in pots to take home, junk modelling, going on the train to Delamere

Forest, looking at mini beasts and using a wormery and ant world to observe these creatures and how they help keep our soil healthy, as well as playing and learning both indoors and outside. We are having an open morning on 16th May from 9:30am until 12 noon for prospective parents/carers and preschoolers.

The Tuesday Toddler group children have been enjoying playing, craft activities and song time and in the coming weeks we will be having messy play sessions as well as using the outside play area (weather permitting) it costs £2 per family group and includes a drink and snack for the children and a hot drink and toast for the adults, no need to book.

**Preschool Open Morning**  
on 16th May from 9:30am until 12 noon for prospective parents/carers and preschoolers.

### Pre-school Fundraising

Adults only  
bingo

nights continue to be held on the last Friday of the month at the Parish Rooms. This began in January, every other month and the next one is on 31st May. Eyes down at 8pm and hot and cold drinks are available or bring your own. All welcome.



In the last few months some WI members have been horse-riding at Weaverham Equestrian Centre while others learned about falcons at

the Falconry Centre on the A49. There have been introductory 'Walking Netball' sessions and more flower arranging classes. Beth Tweddle gave an inspiring talk at the county AGM and book club members have been reading the extraordinary true story of endurance entitled 'Unbroken' by Laura Hillenbrand about a young American during the second World War.

Recent talks at the regular meetings have ranged from learning about the charity 'African Initiatives' from Becky Mallows, the history of spectacles from Stephen Golding, and about swans in Britain from David Cummings. Donations to the charity 'Smalls for All' have been sent to the Scottish based headquarters to be sent on to needy women and girls in Africa.

Next year is the centenary of the Women's Institute Federation in Cheshire; to commemorate this every institute has been encouraged to plant a tree. In February Acton Bridge WI planted a native Rowan Tree in the Parish Room grounds.

At the meeting in May the Resolutions will be discussed and members will enjoy a social supper. Some members will attend the Group meeting to hear Jo Hampson talk about Smoky Jo's. In June

Rob Mason will entertain members with Northern Humour and Song. For those attending the Cheshire Show on 18<sup>th</sup> and 19<sup>th</sup> June it is always fascinating to view the WI exhibits and perhaps to partake of tea and cake in the refreshment tent.

**The 'Big Lunch' is being held on Saturday 15<sup>th</sup> June at the Parish Rooms. See below for details.**

WI Meetings are held on the second Tuesday of the month at 7:30pm at the Parish Rooms. Visitors are always welcome.

## The BIG Lunch



Saturday 15<sup>th</sup> June 12 noon

Acton Bridge Parish Room Car Park

*An opportunity for you and your family to get together with neighbours and friends. There will be a van selling freshly made Pizza, from 12-2pm or you could bring your own picnic. There will be Music, an under 5's play area, and the Tennis Club will be organising a family fun tournament for all ages at 2.30 pm. Any non club members are welcome to take part in the tournament or in a tennis taster session with a coach if suitable footwear is worn. To register for the tennis, phone Peter Richards on 07802 885010.*

*More attractions and games to be announced later. It would be helpful if you can walk to the event or park elsewhere. If the weather is wet the Lunch will be held inside the Parish rooms.*

# Bird (and Nature) Watching

What magnificent blossom this year,  
full of honeybees and bumblebees.



The sun brought out quite a few butterflies as well; red admiral, orange tips, small blues and a large yellow brimstone.

Lots of nest building is still going on, blackbirds on their second, robins, sparrows, goldfinches and baby birds being topped up by parents. Our golden retriever has provided lots of combed fur for the nesting, the blue tits and sparrows grab a huge beak full, while the great tits go to great pains to collect individual hairs in their beaks like whiskers. Marauding ducks have been kept out of our small pond by using some expanding trellis, otherwise they pull the weed and plants to ribbons. A handy squirrel deterrent on the bird feeder poles turns out to be a liberal squirt of WD-40.

The usual selection of garden birds are still eating us out of house and home and keeping the feeders topped up is a daily task. Often wonder how long does one peanut last a bluetit! Two song thrushes are having a singing contest starting around five am and going on most of the day and the swallows are back from their winter haunts.

Gadwall are calling and visible on the Weaver, Grebes have been doing their mating dance since late February, and Skylarks have been singing around the sludge beds and fields since mid-Feb. Several grey wagtails can be seen around the locks and green woodpeckers have been spotted on several occasions in the same area. In other areas close by, numerous Blackcaps are singing in clumps of trees and woodlands. The swallows have started to return, but in small numbers as yet.

**Stop Press... Stop Press... Stop Press... Stop Press... Stop Press...**

Black Kite (very rare in UK) seen earlier this week over AB Railway Station, and Grasshopper Warbler singing at the dredging bed along River Weaver today (written on 18 April).

*Chris Williams and Geoff Morris*

## Weaverham & Acton Bridge Village Show

Planning is underway again for the next Weaverham and Acton Bridge Village Show which will take place on **Saturday the 10<sup>th</sup> August 2019**.

The show has been a great success for many years, we are so fortunate to have many gifted and talented people living locally who support the show and enjoy exhibiting items, please keep up your support. If you haven't been involved before or maybe you are new to the area, the committee would encourage you join in. There are a variety of categories that you can enter; art work, handy crafts, flowers and vegetables that you have grown, as well as cakes, biscuits, breads, pies or preserves that you have made, plus more! If you enjoy taking a photograph or two consider entering photos that fall within this years themes. They are as follows:

**Recycled**                      **Stone**                      **Cheshire night life**  
**Black and white**            **Smile**

The Weaverham Trust Award theme is **"Our Village from Dusk till Dawn"**.

Schedules will be available later in the year, you will be able to download from our website [www.weaverhamshow.co.uk](http://www.weaverhamshow.co.uk), or collect one from a number of local shops, Weaverham community centre and the library, these detail all categories and include an entry form.

We really enjoy seeing the fabulous entries from children who live in Weaverham or Acton Bridge or those who attend one of the schools or playgroups in our area. Templates for the junior section will be circulated to schools/playgroups shortly.

The committee would love to hear from anyone who may be able to volunteer their services to assist in planning or help on show day. You can contact us via the website or the phone number below. Please also contact us if you are able to donate a raffle prize or would like to sponsor the show.

We look forward to keeping you up to date with show information via our website and in future editions of the Weaverham News.

Don't forget to save the date!

Kind regards Denise Whitney, Show Secretary (Telephone: 07891460772)

(On Behalf of the Show Committee)



## Weaverham Library - Free to Join, with something for everyone

### Opening times

Monday and Friday 9.30 – 1, 2 – 7pm

Tuesday and Wednesday 9.30 - 1, 2 – 5pm

Thursday Closed

Saturday 9.30 – 1pm

01606 274344. Russet Road, CW8 3HY.

**Summer** is just around the corner and the days are getting longer and brighter - a time to relax, unwind and read a good book. We have lots of brilliant books, DVDs and audio books waiting for you here so just come along and see us.

### \*\*Spotlight on - Ancestry 1 to 1 sessions\*\*

If you have been inspired by programmes like **'Who do you think you are?'**, then come along to our **free 1 to 1 Ancestry sessions** available between **10am and noon** on the mornings of **Monday 10 and 17 June and Wednesday 12 and 19 June**. These sessions are very informal and are suitable for both a complete beginner or for those requiring just a little help. Remember, everyone has to start somewhere and with our help you may find out something about your family that you never knew before. So, come along and be inspired by the past! Drop in or book a place. **Everyone welcome.**

**May** is crime fiction month and we will have some great displays to tempt you with. Come along and treat yourself!

**On-line scam awareness sessions** provided by Nat West Bank will be here on Wednesdays 15 May and 19 June, between 10am and 12 noon.

Visiting the **Royal Cheshire Show** this year? Advance tickets are available here.

The brilliant **Summer Reading Challenge 2019** starts on **Saturday 13 July!** Make sure your children join in this year and have a fantastic time while maintaining their reading level. Lots of goodies and a medal and certificate at the end. Don't forget!

**Free** internet access for 1 hour every day on our public computers. Drop in or book a time-slot. We also have a **photocopier (black and white or colour), colour printer and scanner plus free wi-fi.**

We look forward to seeing you soon - Gill, Carol, Ann and Val.

### Regular events:-

**Monday**, Knit and Natter 11 - 12.30,

**Tuesday**, Baby Bounce 10.30am, Adult colouring club and jigsaw puzzles 2pm,

**Wednesday**, coffee morning, Digital Storytime 3.30pm and **Friday**, Rhyme-time 11-11.30am **Saturday**, Lego Club drop-in 10.30 – 12.30. **Everyone**

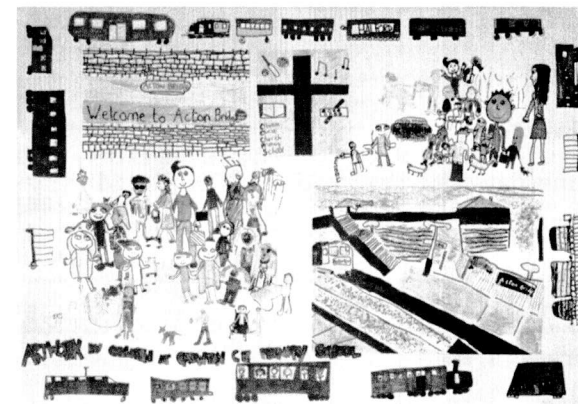
**welcome!**

**'Friends of Acton Bridge Station'** held an event at the station on Saturday 27<sup>th</sup> April. Our thanks go to Bob Holt, chair of Acton Bridge Parish Council who officially unveiled new artwork by children of the Pre-School (front page) and Crowton CE Primary School (below). Their colourful (sorry, we can't appreciate the colours here!) contributions now brighten up the entrance hall's walls.

A big thank you to all the children for their beautiful works of art.

'Friends of Acton Bridge Station' are a group of volunteers who are adopting the station in order to improve it. They

receive funding from the train operator London Northwestern, and, as well as commissioning the superb artwork from local children, they have begun work to clear the overgrown borders at the station and have planted new flowers and shrubs. If anyone is interested in joining the volunteer group, no matter how small a contribution, please get in touch via the Village Facebook page.



### TIME TO JOIN ACTON BRIDGE TENNIS CLUB

New members are most welcome and should review our website for further information. [Actonbridgetennis.co.uk](http://Actonbridgetennis.co.uk)

Membership is exceptional value at just £40 for the whole family, £25 for an adult or just £10 for a junior.

The Club has again partnered with First Advantage to offer professional coaching sessions for all levels and ages at very reasonable prices, details available via the web site.

Existing members please complete your renewal as detailed in a recent email to ensure access once the code is changed.

## Milton Baptist Church

Sundays 10.45 am Faith time – format can be arranged

Tuesdays 1.30 pm English Country Dancing, keeping alive many old dances, at the Parish Room

Thursdays 5.00 pm Help with homework, help with difficult topics, further teaching when required

### A NEW OFFER

Wednesdays 2.00 pm AFTERNOON ALLSORTS – Craft Corner, bring your own – cross stitch, knitting etc.

Jigsaw Junction – 1000 piece provided

Colouring Crossing – adult colouring pencils provided, card pictures- your choice with pattern or bring your own

Table Tennis Turn Round – one table set up

If you would like to be involved in such activities on Wednesdays, please contact Margaret to see if a group can be formed. £2 per session. All questions to Margaret 01606 851 852



## M message from the Editor.....

There's a lot of positive things to report in this edition - improved rail service from the village, a new 'Friends' group to make the station area more attractive and The Big Lunch event in June.

There's no shortage of ways to get involved locally whether this be volunteering for the Millenium Wood or Friends of the Station groups, attending meetings of Acton Bridge Community Association (ABCA) or the Parish Council or coming along to fundraising events in the Parish Rooms. Its all on our doorstep, all fun stuff and contributions directly help to make Acton Bridge a better community.

Suggestions and news for the next edition of the newsletter (comes out in **August**) are due by **20 July** by email to [sarah.pendy.sharp@gmail.com](mailto:sarah.pendy.sharp@gmail.com) or by phone **07888 733389**. If you're unsure or want to discuss, please give me a buzz. Likewise if you're interested in advertising (£20 per year and at editorial discretion) please contact me. Sarah

## Village Contacts

Bob Holt	Chairman, Parish Council	01606 853698
Margaret Holt	Clerk to the Parish Council	01606 853698
Selina Rooney	Chairman, ABCA	01606 852224
Gill Spanton	Secretary of ABCA	01606 852356
Gill Spanton	Parish Rooms Bookings	01606 852356
Sarah Sharp	Newsletter Editor	07888 733389
John Spanton	Acton Bridge Art Group	01606 852356
Robert Gleave	Billiards/Snooker	01606 852156
Chris Williams	Birdwatching	01606 851788
Kath Johnson	Bridge Club	01606 852711
Dee Smith/Anna Alexander	Distaff Singers	01477 532982 01925 658447
Jason Norris	Flat Green Bowling Club	07831 774975
Margaret Nixon	Folk Dance Workshop	01606 851852
Joanne Moss	Jo's Art Group	01606 851996
Sharon	Pre-School/Toddlers	07999 633011
Brenda Makepeace	Scottish Dancers	01606 551126
Christa Stevens	Slimming World	07775 666206
Gary Smithies	Tae Kwon do	07754 801190
Lynn Fowler	Tennis	01606 852240
Cheryl Hamilton	Verdin Beaders Group	01606 852878
Bernice Tackley	Weaver Vale Art Society	01606 76204
Valerie Mitchell	WI Secretary	01606 854144
<b>INCIDENT DESK</b>	<b>LOCAL POLICE</b>	<b>0845 458 0000</b>
<b>NON EMERGENCY</b>		<b>101</b>

## Classified Advertisements *(continued from back pages)*

Photography  
Portraits

**Helen Rae Photography** Creative baby, children's, family and pet portrait photographer working on location in your favourite places to create beautiful, natural and heart-warming artwork for your home.  
[www.helenraephoto.com](http://www.helenraephoto.com) or [instagram.com/helenraephoto](https://www.instagram.com/helenraephoto)  
Contact [enquiries@helenraephoto.com](mailto:enquiries@helenraephoto.com)

Podiatry

**Weaver Podiatry Holistic Footcare**  
Katheryn Sheldon BSc (hons) M. Ch.S HCPC registered.  
Based in Weaver Business Centre, but happy to do home visits in the Acton Bridge area. Also stocking a range of urea based foot creams. Phone **01606 853711/07870 457482**  
or email [kate@weaverfootcare.co.uk](mailto:kate@weaverfootcare.co.uk)



Pre-school

**Acton Bridge Pre-school** Free places for 3 and 4 year olds. Join from 2.5 years. Sessions run from 9am-3pm to help with local school runs. Contact **07999 633011**

Taxi

**Club Class 24-7 Taxis** On demand taxis for local journeys, nights out, airport and rail transfers, shopping trips and courier work  
Phone **01606 46666/42010/44999**  
Email [info@cheshire-taxi.co.uk](mailto:info@cheshire-taxi.co.uk)  
Facebook **Club Class 24-7 Cheshire Taxi**

Weight Loss

**Slimming World** Love Life—Love Food—Love Slimming World!  
Its where the magic happens! Every Wednesday 7pm in Acton Bridge Parish Rooms.  
Email [slimmingworldactonbridge@gmail.com](mailto:slimmingworldactonbridge@gmail.com)  
Phone **Christa Stevens 07775 666206**

Fuel



**County Oil Group**  
For your heating oil requirements, call our hotline for friendly, personal service on **01928 718000** or order online at [www.county-oil.co.uk](http://www.county-oil.co.uk)

## Classified Advertisements *(continued)*

Garden  
Design

### Tim Fowler Garden Design

Garden makeovers, new patios, stunning borders, water features, pergolas. Full landscaping service to suit budget. RHS gold medal 2009 Tatton, Bronze medal Chelsea 2010

Call **01606 852240** or **07963 955426** or email [timsgardens@aol.co.uk](mailto:timsgardens@aol.co.uk)

Garden Design  
and Maintenance

### David Hodkinson (formerly of Acton Bridge Garden Centre)

For your garden maintenance or landscaping needs

Contact Dave on **01606 624364** or **07791 414919**  
or email [gentlemengardeners@gmail.com](mailto:gentlemengardeners@gmail.com)

Guest House

### Wall Hill Farm Guest House, Acton Lane



Eight luxurious bedrooms, all ensuite. Ideal for your visiting family and friends. Contact Richard and Pam. Phone **01606 852654** or Email [info@wallhillfarmguesthouse.co.uk](mailto:info@wallhillfarmguesthouse.co.uk) or visit [www.wallhillfarmguesthouse.co.uk](http://www.wallhillfarmguesthouse.co.uk)

Legal



For all your legal requirements speak to one of our friendly team on **01606 74301**  
or email

[reception@mosshaselhurst.co.uk](mailto:reception@mosshaselhurst.co.uk) or visit [www.mosshaselhurst.co.uk](http://www.mosshaselhurst.co.uk)

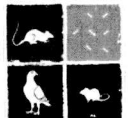
Marquees

**Acton Marquees**  
Whatever the event, we've got it covered!

Acton Marquees provides marquees and furniture for all occasions. Contact Phil on **01606 854566** or (mob) **07973 258922**  
email: [info@actonmarquees.co.uk](mailto:info@actonmarquees.co.uk) or visit [www.actonmarquees.co.uk](http://www.actonmarquees.co.uk)

Pest  
Control

**Four Seasons Pest Solutions Ltd** for domestic and commercial pest control of all pests including birds, rats, mice, wasps and bees. Phone Robert on **01606 620524/07828 149211** or email [info@fourseasonpestsolutions.co.uk](mailto:info@fourseasonpestsolutions.co.uk) or see [www.fourseasonpestsolutions.co.uk](http://www.fourseasonpestsolutions.co.uk)





## Classified Advertisements *(see also inside back cover)*

Butchers

**Georges Butchers** Family run local butcher (Northwich Rd Weaverham)  
Local produce at affordable prices, skilfully prepared as you want it.  
Free delivery available. Orders may be placed by phone **01606 852104**

*Open:* Mon-Fri 7am – 5.30pm (Wed 7am – 2.30pm, Sat 7am – 4pm)

Cakes

### **Celebration Cakes Naturally!**

Homemade celebration cakes made from the finest organic, Fairtrade and home-produced ingredients, freshly made to order to your design. Prices from £35. *Contact Lynn on 01606 852240/07748 401082 or Email [celebrationcakesnaturally@aol.co.uk](mailto:celebrationcakesnaturally@aol.co.uk)*

Cleaning

**Bizzie Lizzie Cleaning Services** for your cleaning needs and for that



friendly, personal and reliable touch

*Phone Jan Mundy on 01606 559103 / 07732 867488 or*

*Maria Bate on 07449 010516 or*

*email [bizzielizziecs@gmail.com](mailto:bizzielizziecs@gmail.com)*

Curtains  
and blinds

### **Delamere Blinds and Curtains**

Suppliers and installers of blinds, curtains, poles, tracks, awnings and canopies. Huge selection of styles and fabrics.

For a no-obligation estimate *contact Kevin Hand on 01606 854061 or email [info@delamereblindsandcurtains.co.uk](mailto:info@delamereblindsandcurtains.co.uk)*

Dog  
Grooming

**Fully qualified professional Dog Grooming** with collection service available. Also local dog walking and animal sitting.

*Contact 07766 704136 or email [s.puffett@sky.com](mailto:s.puffett@sky.com)*



Footwear  
Falconry

**Vale Royal Falconry** Birds of prey, archery and meerkat experiences.

Gift vouchers are available for special occasions, providing a great day out for friends and families! Visits by appointment -

*Contact Phil and Nanette 01606 851873 / 07974 064078 or visit [www.valeroyalfalconry.com](http://www.valeroyalfalconry.com)*

**FootArt**  
*shoes and accessories*



Local retailer of branded footwear—Crocs, Skechers, Birkenstock, Aigle boots and many more. Ranges for men, women and children.

Come and see us. *Contact 01606 853229/782651 for opening hours or visit [www.footart.co.uk](http://www.footart.co.uk). Unit 42 Cosgrove Business Park, Anderton*